

*Elysium*  
Boulevard  
LIFE MEANS MORE

# INTERNATIONALLY ADMIRERD. EXCLUSIVELY YOURS

Trusted and admired for uncompromising quality and trend-setting innovation, Elysium Properties has earned an unmatched reputation for luxurious developments, distinctive architectural landmarks and the finest residential, retail and office addresses.



# MASTERFULLY CONCEIVED. IMPECCABLY REALISED

Boulevard, designed and crafted by Elysium Properties, is an iconic structure inspired by the celebrated French architecture. With its columns and arched windows adorning the sculpted facade, Boulevard is a majestic grandeur of absolute splendour. The luxurious 3 & 4 bedroom villaments spread across 2 levels are ultra-spacious homes resplendent with opulence.

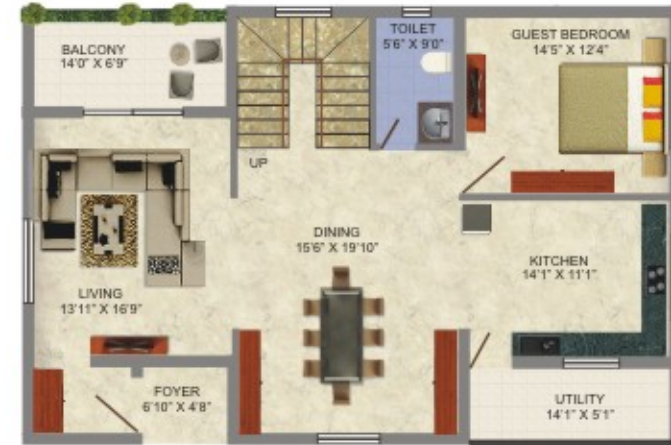


The  
FLOOR PLANS



UNIT A

3380 Sq. Ft. / 315 m<sup>2</sup>



LOWER LEVEL

- FOYER
- LIVING
- GUEST BEDROOM
- KITCHEN
- DINING
- BALCONY
- UTILITY



UPPER LEVEL

- FAMILY ROOM
- MASTER BEDROOM
- BEDROOM
- DRESS
- STUDY ROOM
- MEDIA ROOM
- BALCONY



The  
FLOOR PLANS



UNIT B

3740 Sq. Ft. / 348 m<sup>2</sup>



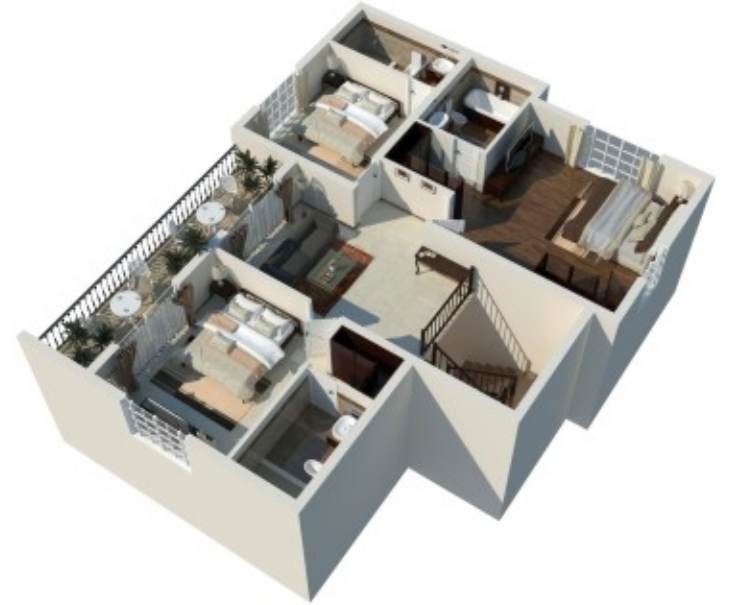
LOWER LEVEL

- LIVING
- GUEST BEDROOM
- DRESS
- KITCHEN
- DINING
- BALCONY
- UTILITY



UPPER LEVEL

- FAMILY ROOM
- MASTER BEDROOM
- BEDROOM
- DRESS
- BALCONY



The  
FLOOR PLANS



UNIT C

3380 Sq. Ft. / 315 m<sup>2</sup>



LOWER LEVEL

- FOYER
- LIVING
- GUEST BEDROOM
- KITCHEN
- DINING
- BALCONY
- UTILITY



UPPER LEVEL

- FAMILY ROOM
- MASTER BEDROOM
- BEDROOM
- DRESS
- MEDIA ROOM
- BALCONY



The  
FLOOR PLANS



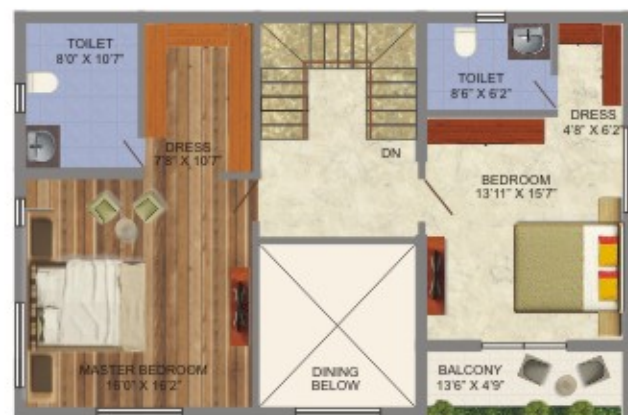
UNIT D

2920 Sq. Ft. / 272 m<sup>2</sup>



LOWER LEVEL

- FOYER
- LIVING
- GUEST BEDROOM
- KITCHEN
- DINING
- BALCONY
- UTILITY



UPPER LEVEL

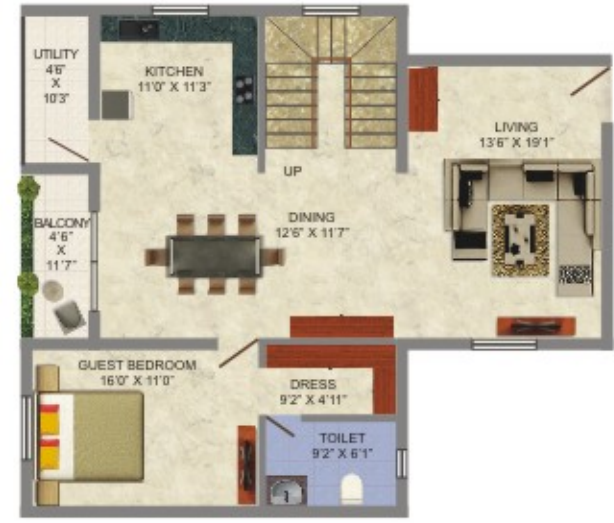
- MASTER BEDROOM
- BEDROOM
- DRESS
- BALCONY



The  
FLOOR PLANS

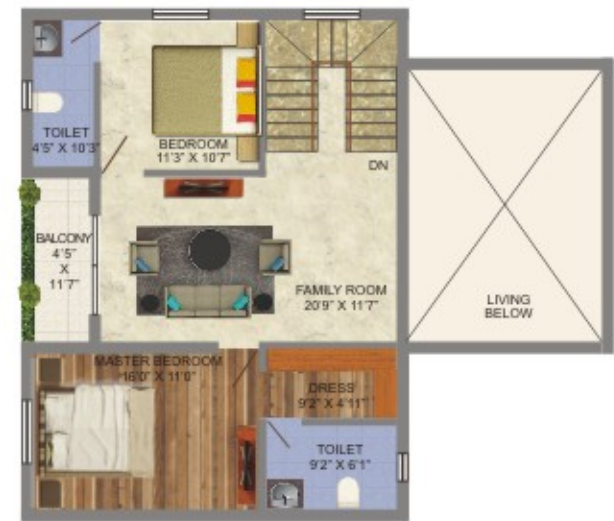
UNIT E

2850 Sq. Ft. / 265 m<sup>2</sup>



LOWER LEVEL

- LIVING
- GUEST BEDROOM
- DRESS
- KITCHEN
- DINING
- BALCONY
- UTILITY



UPPER LEVEL

- FAMILY ROOM
- MASTER BEDROOM
- BEDROOM
- DRESS
- BALCONY





The  
FLOOR PLANS

UNIT F

2860 Sq. Ft. / 266 m<sup>2</sup>



LOWER LEVEL

- LIVING
- GUEST BEDROOM
- DRESS
- KITCHEN
- DINING
- BALCONY
- UTILITY



UPPER LEVEL

- FAMILY ROOM
- MASTER BEDROOM
- BEDROOM
- DRESS
- BALCONY



The  
FLOOR PLANS



UNIT G

2730 Sq. Ft. / 254 m<sup>2</sup>



LOWER LEVEL

LIVING  
GUEST BEDROOM  
KITCHEN  
DINING  
BALCONY  
UTILITY



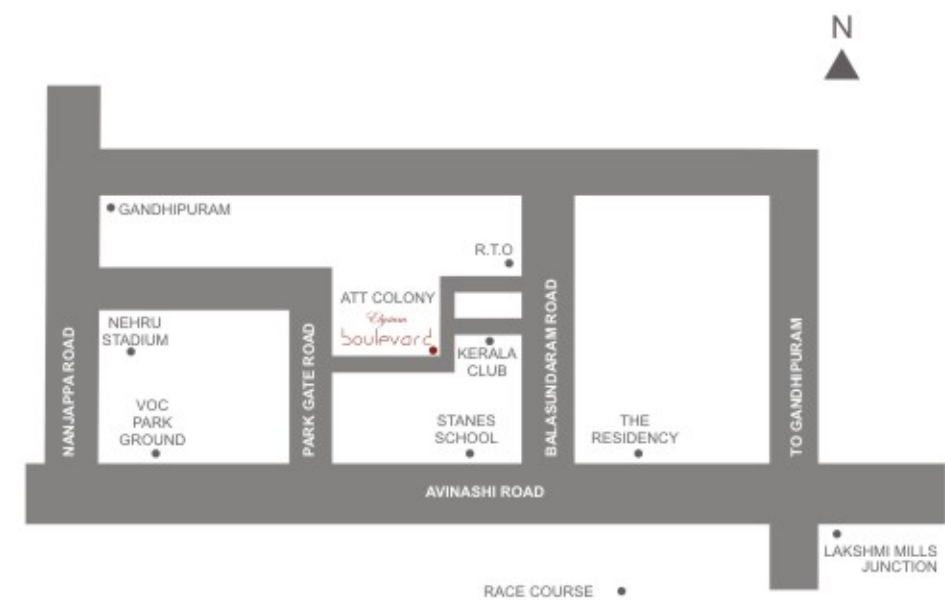
UPPER LEVEL

MASTER BEDROOM  
BEDROOM  
DRESS



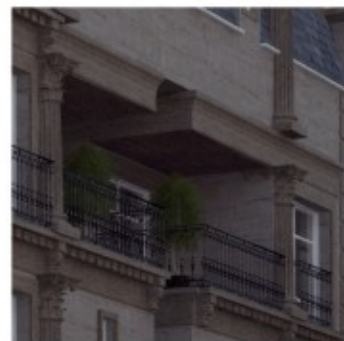
# METICULOUSLY REFINED. PRECISELY LOCATED

Elysium Boulevard located in ATT colony, a prime and elite residential locale, is a mere 300 meters away from Avinashi Road. It enjoys close proximity to major 5 star hotels, educational institutions and hospitals.



The

# DETAILING



Technical

# HIGHLIGHTS

## Structure

Stilt plus 4 storied RCC framed structure with block masonry walls.  
Seismic zone III compliant structure.  
Car park provided in stilt floor.

## Foyer / Living

Superior quality vitrified tile flooring and skirting.  
Emulsion paint for walls and ceiling.

## Dinning / Bedrooms / Corridor

Superior quality vitrified tile flooring and skirting.  
Emulsion paint for walls and ceiling.  
Laminated wooden flooring for the master bedroom.

## Toilets

Superior quality anti-skid tile flooring.  
Superior quality glazed ceramic tiling for walls.  
Emulsion paint for walls and ceiling.  
All sanitary fittings will be Roca / American Standard or equivalent.  
Provision for exhaust fan in all toilets.  
Granite vanity counter in master bedroom toilet.  
Concealed master control cock from inside for easy maintenance.

## Kitchen

Superior quality vitrified tile flooring and skirting.  
Superior quality glazed tiling for walls.  
Emulsion paint for walls and ceiling.  
Granite kitchen platform with stainless steel sink with drain board.  
Provision for chimney.

## Plumbing

Concealed PVC piping.  
Common overhead tank and underground sump.  
Separate tank provision for corporation water in the underground sump and overhead tank.  
Water softening plant for the community.

## Electrical

Weather resistant concealed wiring.  
Complete MCB & ELCB protection for each flat.  
Adequate lighting and plug points.  
Television and telephone points provided in living and master bedrooms.  
All electrical fittings to be of havells or equivalent brand.  
All electrical switches to be Crabtree or equivalent make.  
Three phase EB Connection

## Common Areas

Lobby area finished with granite.  
Two 6 passenger lifts.  
MS / SS handrail for the staircase.  
All other common area finished with superior quality tile flooring and skirting.

## Doors and Windows

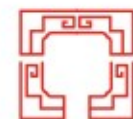
Hard wood framed panelled shutter in main entrance door polished with matt finish.  
Skin doors with densified hard-wood frames in bedrooms.  
Flush doors with waterproof laminated doors for Bathrooms.  
UPVC frames with glass shutters for all the windows.

## Landscape

Designer landscaping all around the community.  
Common Rain water harvesting.

## Other Features

Club House  
Billiards  
Gymnasium  
Private terrace & Alfresco party lawn  
Round the clock security with CCTV monitoring  
Common servants / drivers toilet.  
Intercom facilities  
Power backup provided for the flats and common areas.



**Elysium Properties™**

Residential - Commercial - Hotels

699, Avinashi Road, Coimbatore-641 037, India.

Tel: +91 422 - 656 2222 / 3333 / 4444

+91 96777 65622 / 96777 65644

[www.elysium.in](http://www.elysium.in) / [info@elysium.in](mailto:info@elysium.in)